

## OFFICERS & STAFF

### Georgia District Director

Rick & Rhonda Stephens  
stephensrick@bellsouth.net  
770.562.3277 cell:404.245.0496

Asst. District Directors  
Recruitment & Retention  
Rally Coordinator  
Dolly & Bill Chatel-Dodd  
D95magenta@bellsouth.net  
blackwingbill@bellsouth.net  
678.230.7884

Asst. District Directors/  
District Trainers  
Gary & Linda Feaselman  
wingrider54@bellsouth.net  
770.474.6834

Asst. District Directors  
Rally Vendor Coordinators  
Ron & Susan Larsen  
goldwing1@cox.net  
478.971.4291

District Rider Educator  
Chuck & Anne Reed  
2upgawing@comcast.net  
706.790.1626

Asst. Rider Educator  
Danny & Janet Mackey  
y2kwing@juno.com  
770.345.6374

District Treasurer  
Greg & Mickey Bailey  
gregbailey@Charter.net

District Membership  
Enhancement  
Bill & Betty Livingston  
livingstonb@netzero.net  
229.889.1705

District Motorist Awareness  
Robert & Karla Greer  
robertgreer@bellsouth.net

Asst. Rally Coordinator  
Vicki Watkins  
vsw@alltel.net

### 2006 District Couple of the Year

Sid & Donna Cohen  
Cateringbycohen@bellsouth.net

Region A Director  
Larry & Patti Lingo  
lingwing@gte.net

# GWRRA GEORGIA

Volume 3, Issue 5

May, 2006



## Wing Fling 2006

### \$500 TICKET STUBS

Reminder to all Chapter Directors: The \$500 Chapter ticket stubs should be brought to Wing Fling and given to Greg or Mickey



Bailey...if they are not brought, then those who purchased the tickets will not have a chance to win the \$500 prize.



### CORNFIELD TALENT SHOW

Yee Haw!! We're gonna have us a Talent Show!!! At Georgia's Rally this year on Thursday night, June 15, after you have filled up on our scrumptious barbecue dinner, come settle in for some GWRRA home grown entertainment. This year, Georgia is putting' on a real high-falutin' Talent Show! That's right—a Cornfield Talent Show. We gots us some real air condition'in and some real nice sittin' chairs. And the best part—GWRRA's finest are gonna fill the stage with songs and laughter as they show us their down home talents. This talent show will be

fast paced with our cornfield comics popping up between acts with good ole country humor. There will be singers, chapter skits, and maybe even some pickers—and we don't mean nose pickers!



Performers will get to choose their category—Serious Individual or Chapter/Comedy Individual or Chapter. Plaques will be awarded for first and second place for each category. **Entertainers will need to sign-up by 6 o'clock, Thursday to be included in the show.** Sign-up sheets will be in the hallway outside of the game room. If you anticipate a late arrival, contact Dolly Chatel at 678.230.7884 to make arrangements for your performance.

### DOOR PRIZES

Chapter Directors, we need to know your plans regarding your Chapter's \$25 door prize for Wing Fling. If you are bringing a door prize to the rally, please let us know what it is. If you are donating \$25 for the staff to purchase a door prize for you, please send that money right away. We get busier as time draws nearer the rally and must get these items purchased. Please e-mail Rick or Rhonda your intentions so we can plan accordingly. We appreciate your help!!!

## Wing Fling Information Continued

### Chapter Newsletter Competition



Chapters submit newsletters to District Trainers (Linda & Gary Feaselman) via mail (**not e-mail**) using the same format that is distributed to chapter members (color or black & white).

Newsletters considered for judging will be from the months of February through May.

Before the District Rally, a month (Feb - May) will be chosen at random. All newsletters from the selected month will be judged at the District Rally by non-Georgia District Staff using the score sheet in the Officer's Guide Book.

Two categories will be judged, color and black & white. A first and second place winner will be chosen in each category.

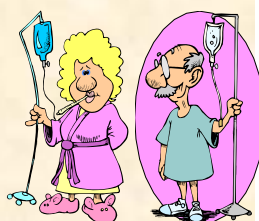
### CHAPTER SCRAPBOOKS

Questions have raised as to whether there will be a Chapter Scrapbook competition with the Chapter Collage. Simple answer...YES. So if you have a scrapbook on your Chapter's activities, bring it to Wing Fling for competition.



### AMONG OUR SICK:

GA-H Jeanne Stegemiller  
GA-O Tommy Waller



### Chapter Collage Competition

ALL Chapters from sea to shining sea are invited to enter their own special display of chapter pride in Georgia's Chapter Collage Competition. Chapters entering the contest will bring their Collages to the Hospitality Room no later than 9:30 am Saturday, June 17, 2006. Early entries are welcome and will be displayed around the Hospitality Area.

#### *Required Specifications:*

**Dimensions:** Maximum 36" tall by 36" wide (no minimum size)

**Mounting:** Must have mounting wire or hanging mechanism on back

**Designation:** Must show Chapter, District AND Region designation

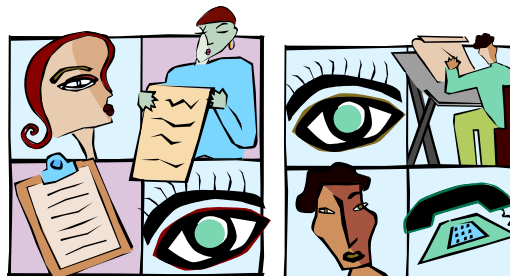
**GWRRA Name or Logo:** Must have GWRRA or Gold Wing Road Riders Association

#### *Judging Criteria & Point Structure:*

0 to 10 Points	Originality , Creativity
0 to 10 Points	General Appearance
0 to 10 Points	How well it depicts the GWRRA motto - Friends for Fun, Safety & Knowledge
0 to 5 Points	Conforms to Required Specifications
0 to 5 Points	Chapter, District & Region designation displayed

Maximum Score = 40 points

### Create a Chapter Collage



## Wing Fling Information Continued

### HOSPITALITY ROOM

In just a few short weeks, we will be heading to Rome for Wing Fling. I don't know about you, but Betty and I always look forward to our District Rally. It is our opportunity to get away from the work routine and have a great time catching up with all our friends and join in for some fun and great seminars.

As with all of you, we also volunteer to help with the rally in any way we can. The past couple of years, we have helped with the hospitality room. I must say that Georgia has the best hospitality room of any District rally we have ever attended. It is such a pleasure and so much fun visiting with everyone that comes to enjoy all the goodies and beverages and those



that come just to kick back, relax and enjoy the air conditioning. The most popular thing about the hospitality room is the homemade goodies that you bring. If you have a secret family recipe that has been passed down for generations, or a special dessert that no one can resist, please bring it to Wing Fling and enter it into the Goodie Contest. You could walk away with bragging rights for the best goodie. If you don't have the time to make

something, we certainly welcome any store bought goodie that may be your favorite. Even though the store bought items cannot be entered in the Goodie Contest, they are still enjoyed by all that come looking for that sweet treat. For those who prefer something with a little less sugar, we also have a huge selection of sugar free items. We also provide coffee, soft drinks, tea, salty items and lots of friendship.



If you get a break between the seminars and games, please stop by to visit and enjoy hospitality Georgia style.

Bill & Betty Livingston

GA MED/COY Coordinators

## LEARN THE SIGNS OF STROKE

**Face**—does the face look uneven? Ask the person to smile.

**Arms**—does one arm drift down? Ask the person to raise both arms.

**Speech**—does their speech pattern sound strange? Ask the person to repeat a simple phrase (The sky is blue).

**Time**—if you observe any of these signs, it's time to call 9-1-1



# MEMBERSHIP ENHANCEMENT



## 2006 CHAPTER

### COUPLES OF THE YEAR



GA-A Phil & Joyce Piotrowski  
 GA-A2 Kenny & Lynn Register  
 GA-B2 Pete Hefele & Debra Ogle  
 GA-C Buddy & Brenda Jones  
 GA-C2 Larry & Teresa Urban  
 GA-E Kelly & Laura Fleming  
 GA-E2 Clarence & Pat Taylor  
 GA-H John & Lynn Hyde  
 GA-H2 Ray & Betty Kennedy  
 GA-O John & Vivian Rountree  
 GA-P Randy & Cindy McCaslin  
 GA-Q Frank & Margie Ricigliano  
 GA-S Ken & Traci Thrasher  
 GA-T Mike & Linda Fields  
 GA-V Charles & Loraine Holmes  
 GA-X Mike & Jan Manley

## UPCOMING EVENTS

**May 4-6**—South Carolina District Rally, Spartanburg, SC. Check [gwr-ra-ga.com](http://gwr-ra-ga.com) for a link to the SC webpage.

**May 13**—GA-D2 Fun Day, North GA Fairgrounds, Dalton. Contact Frank Cronan, 706-275-6560.

**May 20**—GA-H Fun Day. Albany Exchange Club Fairgrounds. Contact Jeff Verner, 229.883.5598

**June 15-17**—**GA District Wing Fling**, Rome, GA. Check [gwr-ra-ga.com](http://gwr-ra-ga.com) for rally events and flyers. Contact Rick & Rhonda Stephens at 770-562-3277.

**July 2-6**—Wing Ding, Nashville. For info on this national rally, visit [gwr-ra.org](http://gwr-ra.org)

**Aug. 18-19**—GA-C Buccaneer Beach Bash, Jekyll Island. Contact Ray Potter, 912 267 1536.

**Aug. 31—Sept. 2**—Region A Rally, Perry, FL. Check [gwr-ra-ga.com](http://gwr-ra-ga.com) for a link to the Region A website and info on this rally.

**Sept. 9**—GA-Q 3rd Annual Dessert Auction & Burger Burn, Warner Robins. Contact Dave Aiken, 478-953-4886

**Sept. 30**—GA-A Fall Harvest Fun Day. High Falls State Park. Contact Bob Greer, 770.473.1316.

**Oct. 7**—GA-V Fun Day. Oak Grove Community House, Contact Angie Parkerson, 478-934-0584

**Nov. 18**—GA-H2 Toy Run, PoJo's Truck Stop, Hwy 301S, Statesboro. Contact Curtis Gay, 912-687-1877

**Wind Down will be held in November. Plans will be announced.**

## GA Traveler's Plaque



Tom Finley and his crew from GA-W, Woodstock, captured the plaque from GA-T at the Spring Fling. The plaque will be given away at the regular monthly meeting of GA-W on Sunday,

May 21, eat at 10 AM, meet at 11 AM. Contact Tom at [thfinley@earthlink.net](mailto:thfinley@earthlink.net) for more information.

**MAY MEETING CANCELATIONS**— Be advised that GA-H2, Statesboro, and GA-Z, Newnan, will NOT HAVE MEETINGS in May. Regular meetings resume in June.

## Hillbilly Medical Journal

Terminology that you might need to know at the Rally.

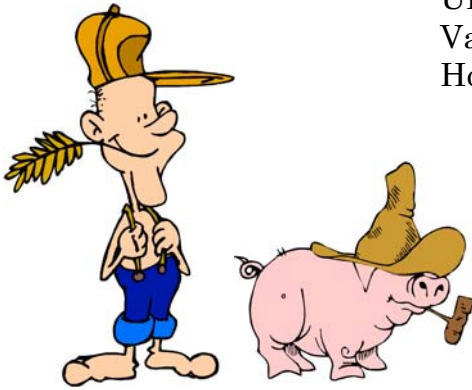
Terminal Illness—Getting sick at the train station.

Tumor—more than one.

Urine—Opposite of mine. (I am in)

Varicose—Near by.

Hospital—The biggest building in town, other than Joe's feed warehouse or Frank's Lumber yard.



---

GWRRRA GA

460 Taylors Gin Road  
Temple, GA 30179

770.562.3277

Friends for Fun, Safety, and Knowledge

**Gwrra-ga.com**